

VISITORS (Last Name, First)

NO.	CHRISTIAN COUNTY	Tot FG		3-POINT		FT	FTA	Rebounds			PF	TP	A	TO	BLK	S	TIME
		FG	FGA	FG	FGA			OFF	DEF	TOT							
23	THOMPSON, COREY	2	11	1	1	4	5	4	3	7	2	9	2	3	2	4	23:27
35	BIDES, STEVE	7	13	0	1	2	3	3	6	9	2	16	1	1	0	2	28:01
51	LOVAN, TONY	7	11	0	0	0	4	3	8	16	5	14	0	0	0	0	29:54
13	LOVAN, JAMIE	6	14	0	0	0	1	0	1	1	2	12	4	8	0	2	31:38
25	CHAMBERS, CHRIS	6	19	5	11	0	0	1	2	3	4	17	4	6	0	0	29:13
45	MCCOMBS, TONY	1	2	0	0	0	0	1	1	2	0	2	0	0	0	0	8:32
23	LEAVELL, LEON	0	0	0	0	0	0	0	0	0	2	0	0	0	0	0	2:25
05	AKIN, DOUG	0	0	0	0	0	0	0	0	0	0	0	0	0	0	0	0:22
15	PUTTY, JASON	0	1	0	1	0	0	0	0	0	0	0	0	0	0	0	0:22
21	JONES, DERRICK	0	0	0	0	0	0	0	0	0	0	0	0	0	0	0	0:22
55	PEPPER, CALVIN	0	0	0	0	0	0	0	0	0	1	0	0	0	0	0	0:15
11	OWEN, ANDRE	0	0	0	0	0	0	0	0	0	0	0	0	0	0	0	0:22
31	LOVAN, SHANNON	0	0	0	0	0	0	0	0	0	0	0	0	0	0	0	0:7
TEAM REBOUNDS (INCLUDED IN TOTALS)								4		4							
TOTALS		29	71	6	14	6	13	21	21	42	18	70	11	18	2	8	160
TOTAL FG		1st HALF 9/16		56.3%		2nd HALF 20/55		36.4%		GAME 29/71		40.8%		DEADBALL			
3-POINT FG		1st HALF 1/2		50.0%		2nd HALF 5/12		41.7%		GAME 6/14		42.9%		REBOUNDS		3	
FREE THROWS		1st HALF 0/0		0.0%		2nd HALF 6/13		46.2%		GAME 6/13		46.2%					

HOME (Last Name, First)

NO.	MARION COUNTY	Tot FG		3-POINT		FT	FTA	Rebounds			PF	TP	A	TO	BLK	S	TIME
		FG	FGA	FG	FGA			OFF	DEF	TOT							
04	CRUME, ALEX	1	2	0	0	2	2	0	3	3	0	4	1	0	0	0	10:07
21	SCOTT, ELTON	4	12	1	2	3	3	1	5	6	2	22	4	2	4	3	32:00
51	O'DANIEL, STUART	2	2	0	0	0	1	1	0	1	3	4	0	0	0	0	14:04
15	DOUGLAS, MICHAEL	6	12	4	10	2	4	0	0	0	3	18	3	5	0	2	32:00
25	EPDS, ANTHONY	7	16	1	4	2	4	3	3	5	2	17	6	5	1	2	32:00
31	ENGLISH, DERRICK	2	7	0	0	3	4	3	3	11	1	7	0	4	0	0	20:02
10	BIGGERS, VINCENT	3	5	0	0	2	4	2	4	6	3	8	0	2	0	0	19:47
TEAM REBOUNDS (INCLUDED IN TOTALS)								9		4							
TOTALS		30	56	6	16	14	22	9	27	36	14	80	14	18	5	7	160
TOTAL FG		1st HALF 12/18		66.7%		2nd HALF 18/38		47.4%		GAME 30/56		53.6%		DEADBALL			
3-POINT FG		1st HALF 2/4		50.0%		2nd HALF 4/12		33.3%		GAME 6/16		37.5%		REBOUNDS		2	
FREE THROWS		1st HALF 1/3		33.3%		2nd HALF 13/19		68.4%		GAME 14/22		63.6%					

OFFICIALS: MONDO ANGELUCCI, C. B. AKIN, ALT-C. KING
 Technicals: None

SCORE BY PERIODS					
CHRISTIAN COUNTY	19	9	18	24	= 70
MARION COUNTY	27	16	15	22	= 80

Attendance: 13,675

COMMENTS: POINTS OFF TURNOVERS

CHRISTIAN COUNTY 28 MARION COUNTY 20 | SECOND CHANCE POINTS
 CHRISTIAN COUNTY 20 MARION COUNTY 12

Produced by the KHSAA Sweet Sixteen Stat Crew with FINAL III - a Product of LEXICON SPORTS*

MARION COUNTY				Time	Score	CHRISTIAN COUNTY	Player	Team
CRUME, ALEX, SCOTT, ELTON, O'DANIEL, STUART, DOUGLAS, MICHAEL, EPPS, ANTHONY						THOMPSON, COREY, BIDES, STEVE, LOVAN, TONY, LOVAN, JAMIE, CHAMBERS, CHRIS Ball to COLONELS		
1-1	100%	1-1	100%	10 ft Lane Jump shot by DOUGLAS, MICHAEL	1 7:34	*2-0		
1-1	100%	2-2	100%	Layup Off Fast Break by SCOTT, ELTON	1 7:18	*4-0		
2-2	100%	3-3	100%	Layup Off Fast Break by DOUGLAS, MICHAEL	1 6:56	*6-0		
				Assist by CRUME, ALEX				
3-3	100%	4-4	100%	3 pt 22 ft Left Base Line Jump shot by DOUGLAS, MICHAEL	1 6:36	*9-0		
				Assist by EPPS, ANTHONY				
REB: 2 A: 2 BLK: 1 TO: 0 PF: 0 S: 2 FT: 0-0 00.0% FG: 4-4 100%				1 6:32		REB: 1 A: 0 BLK: 0 TO: 2 PF: 0 S: 0 FT: 0-0 00.0% FG: 0-3 00.0%		
T I M E - O U T CHRISTIAN COUNTY No. 1								
1-1	100%	5-5	100%	Layup Off Fast Break by O'DANIEL, STUART	1 6:22	9-2*	3 ft Lane Driving by LOVAN, JAMIE	1-2 50.0% 1-4 25.0%
				Assist by SCOTT, ELTON	1 6:09	*11-2		
0-1	00.0%	0-1	00.0%	O'DANIEL, STUART, 1 Free Throw missed	1 6:09		Foul on LOVAN, TONY	1 1
					1 6:08			
					1 5:46	11-4*	9 ft Lane Jump shot by LOVAN, JAMIE	2-3 66.6% 2-5 40.0%
REB: 2 A: 3 BLK: 1 TO: 0 PF: 0 S: 2 FT: 0-1 00.0% FG: 5-5 100%				1 5:40		REB: 2 A: 0 BLK: 0 TO: 2 PF: 1 S: 0 FT: 0-0 00.0% FG: 2-5 40.0%		
T I M E - O U T No. 1 MARION COUNTY								
4-4	100%	6-7	85.7%	3 pt 20 ft Right Side Jump shot by DOUGLAS, MICHAEL	1 5:16	11-6*	Driving Layup by CHAMBERS, CHRIS	1-2 50.0% 3-6 50.0%
				Assist by EPPS, ANTHONY			Assist by LOVAN, JAMIE	1 1
1-2	50.0%	7-8	87.5%	8 ft Left Angle Driving by CRUME, ALEX	1 5:01	*14-6		
					1 4:46	14-8*	4 ft Lane Follow by LOVAN, TONY	1-1 100% 4-8 50.0%
					1 4:35	*16-8		
					1 4:24	16-10*	9 ft Left Side SHOT Off Fast Break by LOVAN, TONY	2-2 100% 5-9 55.5%
				Assist by BIDES, STEVE				1 2
				Sub In: ENGLISH, DERRICK Out: CRUME, ALEX	1 4:18			
2-2	100%	8-10	80.0%	Follow Layup by O'DANIEL, STUART	1 4:03	16-13*	3 pt 22 ft Right Side Jump shot by THOMPSON, COREY	1-2 50.0% 6-10 60.0%
							Assist by LOVAN, JAMIE	2 3
					1 3:46	*18-13		
					1 3:31	18-15*	Dunk Off Fast Break by BIDES, STEVE	1-2 50.0% 7-11 63.6%
							Assist by CHAMBERS, CHRIS	1 4
					1 3:04		Foul on LOVAN, TONY	2 2
1-2	50.0%	1-3	33.3%	ENGLISH, DERRICK, 2 Free Throws missed 1st made 2nd	1 3:04	*19-15		
1-1	100%	9-12	75.0%	3 ft Lane Turnaround by ENGLISH, DERRICK	1 2:45	*21-15		
				Assist by DOUGLAS, MICHAEL				
					1 2:31	21-17*	14 ft Lane Jump shot by LOVAN, JAMIE	3-4 75.0% 8-12 66.6%
				Foul on EPPS, ANTHONY	1 2:12			
					1 2:12		Sub In: MCOMBS, TONY Out: LOVAN, TONY	
				Sub In: BIGGERS, VINCENT Out: O'DANIEL, STUART	1 2:12			
					1 2:12	21-19*	13 ft Lane Jump shot by LOVAN, JAMIE	4-5 80.0% 9-13 69.2%
1-3	33.3%	10-15	66.6%	18 ft Right Side Jump shot by EPPS, ANTHONY	1 1:37	*23-19		
2-2	100%	11-16	68.7%	4 ft Lane Turnaround by SCOTT, ELTON	1 1:07	*25-19		
					1 0:46		Sub In: LOVAN, TONY Out: THOMPSON, COREY	
					1 0:34			
2-4	50.0%	12-18	66.6%	Layup Off Fast Break by EPPS, ANTHONY	1 0:05	*27-19		

MARION COUNTY				Time	Score	CHRISTIAN COUNTY	Player	Team
2	6	Assist by SCOTT, ELTON						

CHRISTIAN COUNTY "COLONELS" vs MARION COUNTY "KNIGHTS"
1st Half Play by Play

PAGE : 3

Tip off at 1:00 p.m. on 03/18/93 at BOYS STATE TOURNEY GAME 5
Produced by the KHSAA Sweet Sixteen Stat Crew with FINAL III - a Product of LEXI

Player	Team	MARION COUNTY
BIGGERS,VINCENT,ENGLISH,DERRICK,DOUGLAS,MICHAEL,SCOTT, ELTON,EPPS, ANTHONY		
1-2	50.0%	13-19 68.4%
3	7	Layup Off Fast Break by BIGGERS,VINCENT Assist by EPPS, ANTHONY
1-2	50.0%	2-5 40.0%
3-4	75.0%	14-22 63.6%
DOUGLAS,MICHAEL, 2 Free Throws made 1st missed 2nd 6 ft Left Side Bank by SCOTT, ELTON		
2-3	66.6%	15-24 62.5%
6 ft Lane Follow by ENGLISH,DERRICK		
5-7	71.4%	16-26 61.5%
4	8	3 pt 22 ft Left Base Line Jump shot by DOUGLAS,MICHAEL Assist by EPPS, ANTHONY Sub In: O'DANIEL,STUART Out: ENGLISH,DERRICK Sub In: CRUME, ALEX Out: BIGGERS,VINCENT
2-2	100%	4-7 57.1%
CRUME, ALEX, 2 Free Throws made both		
3-8	37.5%	17-29 58.6%
Reverse Lay Up Off Fast Break by EPPS, ANTHONY		
4-6	66.6%	18-32 56.2%
1	3	4 ft Lane Turnaround by SCOTT, ELTON Foul on DOUGLAS,MICHAEL Sub In: BIGGERS,VINCENT Out: CRUME, ALEX Sub In: ENGLISH,DERRICK Out: O'DANIEL,STUART
1	4	Foul on SCOTT, ELTON
2-5	40.0%	18-34 52.9%
Dunk Off Fast Break by ENGLISH,DERRICK, missed		

Time	Score	CHRISTIAN COUNTY	Player	Team
THOMPSON, COREY,BIDES, STEVE,LOVAN, TONY,LOVAN, JAMIE,CHAMBERS, CHRIS				
Ball to COLONELS				
2	7:44	*29-19		
2	7:34	29-22*	3 pt 21 ft Right Side Jump shot by CHAMBERS, CHRIS	2-4 50.0% 10-17 58.8%
			Assist by LOVAN, JAMIE	3 5
2	6:26		Foul on BIDES, STEVE	1 3
2	6:26	*30-22		
2	6:00	*32-22		
2	5:46	32-24*	Reverse Lay Up Off Fast Break by BIDES, STEVE	2-3 66.6% 11-20 55.0%
			Assist by CHAMBERS, CHRIS	2 6
2	5:37	*34-24		
2	5:00	34-26*	Follow Layup by LOVAN, TONY	3-6 50.0% 12-25 48.0%
2	4:43	*37-26		
2	4:30			
2	4:30			
2	3:37		Foul on LOVAN, JAMIE	1 4
2	3:37		Sub In: McCOMBS, TONY Out: BIDES, STEVE	
2	3:37	*39-26		
2	3:22	39-28*	Driving Layup by LOVAN, JAMIE	5-8 62.5% 13-27 48.1%
2	3:08	*41-28		
2	2:25		Sub In: BIDES, STEVE Out: CHAMBERS, CHRIS	
2	1:31	*43-28		
2	1:02			
2	1:02			
2	1:02			
2	0:03			
2	0:00		Bad Pass by LOVAN, JAMIE	5 12
2	0:00			

VISITORS (Last Name, First)

NO.	CHRISTIAN COUNTY	Tot FG		3-POINT		FT	FTA	Rebounds			PF	TP	A	TO	BLK	S	TIME
		FG	FGA	FG	FGA			OFF	DEF	TOT							
23	THOMPSON, COREY	1	3	1	1	0	0	1	2	3	0	3	0	3	1	0	15:14
35	BIDES, STEVE	2	7	0	0	0	0	1	2	3	1	4	1	1	0	0	14:48
51	LOVAN, TONY	3	6	0	0	0	0	4	5	9	2	6	0	0	0	0	14:34
13	LOVAN, JAMIE	5	8	0	0	0	0	0	1	1	1	10	3	5	0	0	16:00
25	CHAMBERS, CHRIS	2	6	1	3	0	0	0	1	1	0	5	2	3	0	0	13:35
45	MCCOMBS, TONY	0	1	0	0	0	0	0	0	0	0	0	0	0	0	0	5:49
TEAM REBOUNDS (INCLUDED IN TOTALS)																	
TOTALS		13	31	2	4	0	0	8	11	19	4	28	6	12	1	0	80
TOTAL FG 1st HALF 9/16 56.3%		2nd HALF 4/15 26.7%		GAME 13/31 41.9%												DEADBALL REBOUNDS 2	
3-POINT FG 1st HALF 1/2 50.0%		2nd HALF 1/2 50.0%		GAME 2/4 50.0%													
FREE THROWS 1st HALF 0/0 0.0%		2nd HALF 0/0 0.0%		GAME 0/0 0.0%													

HOME (Last Name, First)

NO.	MARION COUNTY	Tot FG		3-POINT		FT	FTA	Rebounds			PF	TP	A	TO	BLK	S	TIME
		FG	FGA	FG	FGA			OFF	DEF	TOT							
04	CRUME, ALEX	1	2	0	0	2	2	0	2	2	0	4	1	0	0	0	7:10
21	SCOTT, ELTON	4	6	0	1	0	0	0	1	1	1	8	2	0	2	2	16:00
51	O'DANIEL, STUART	2	2	0	0	0	1	1	0	1	0	4	0	0	0	0	9:16
15	DOUGLAS, MICHAEL	5	8	3	6	1	2	0	0	0	1	14	1	2	0	1	16:00
25	EPPS, ANTHONY	3	9	0	2	0	0	1	3	4	1	6	4	0	1	1	16:00
31	ENGLISH, DERRICK	2	5	0	0	1	2	3	2	5	1	5	0	1	0	0	8:50
10	BYGGERS, VINCENT	1	2	0	0	0	0	0	0	0	0	2	0	0	0	0	6:44
TEAM REBOUNDS (INCLUDED IN TOTALS)																	
TOTALS		18	34	3	9	4	7	5	10	15	4	43	8	3	3	4	80
TOTAL FG 1st HALF 12/18 66.7%		2nd HALF 6/16 37.5%		GAME 18/34 52.9%												DEADBALL REBOUNDS 1	
3-POINT FG 1st HALF 2/4 50.0%		2nd HALF 1/5 20.0%		GAME 3/9 33.3%													
FREE THROWS 1st HALF 1/3 33.3%		2nd HALF 3/4 75.0%		GAME 4/7 57.1%													

OFFICIALS: MONDO ANGELUCCI, C. B. AKIN, ALT-C. KING
 Technicals: None

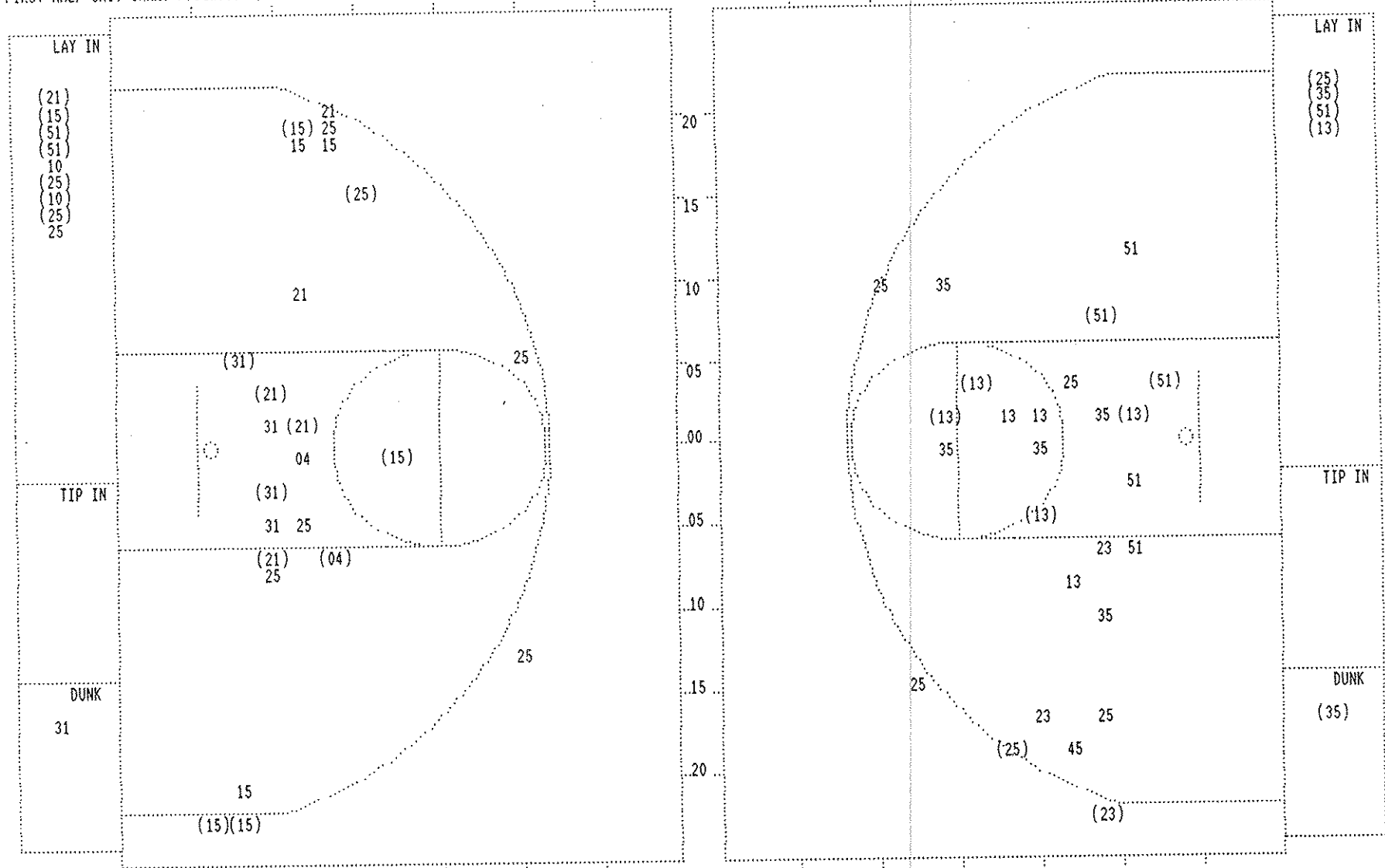
SCORE BY PERIODS

CHRISTIAN COUNTY	19	9	=	28
MARION COUNTY	27	16	=	43

Attendance:

COMMENTS:	POINTS OFF TURNOVERS	13	CHRISTIAN COUNTY	SECOND CHANCE POINTS	4	MARION COUNTY	7
CHRISTIAN COUNTY	3	MARION COUNTY	4	CHRISTIAN COUNTY	4	MARION COUNTY	7

FIRST HALF SHOT CHART Produced by the KHSAA Sweet Sixteen Stat Crew with FINAL III - a Product of LEXICON SPORTS™



MARION COUNTY						
Player			Player			Player
04 - CRUME, ALE	1 / 2	50.0%	10 - BIGGERS, VI	1 / 2	50.0%	
21 - SCOTT, ELT	4 / 6	66.6%	31 - ENGLISH, DE	2 / 5	40.0%	
51 - O'DANIEL, S	2 / 2	100.0%				
15 - DOUGLAS, HI	5 / 8	62.5%				
25 - EPPS, ANTH	3 / 9	33.3%				
Layups	1-9 Ft	10-15 Ft	Over 15 Ft	3 Pointers	Total	
7 / 10	6 / 11	1 / 2	1 / 2	3 / 9	18 / 34	
70.0%	54.5%	50.0%	50.0%	33.3%	52.9%	

CHRISTIAN COUNTY						
Player			Player			Player
23 - THOMPSON,	1 / 3	33.3%	45 - McCOMBS, T	0 / 1	0.0%	
35 - BIDES, STE	2 / 7	28.5%				
51 - LOVAN, TON	3 / 6	50.0%				
13 - LOVAN, JAM	5 / 8	62.5%				
25 - CHAMBERS,	2 / 6	33.3%				
Layups	1-9 Ft	10-15 Ft	Over 15 Ft	3 Pointers	Total	
5 / 5	4 / 11	2 / 7	0 / 4	2 / 4	13 / 31	
100.0%	36.4%	28.6%	0.0%	50.0%	41.9%	

CHRISTIAN COUNTY "COLONELS" vs MARION COUNTY "KNIGHTS"
2nd Half Play by Play

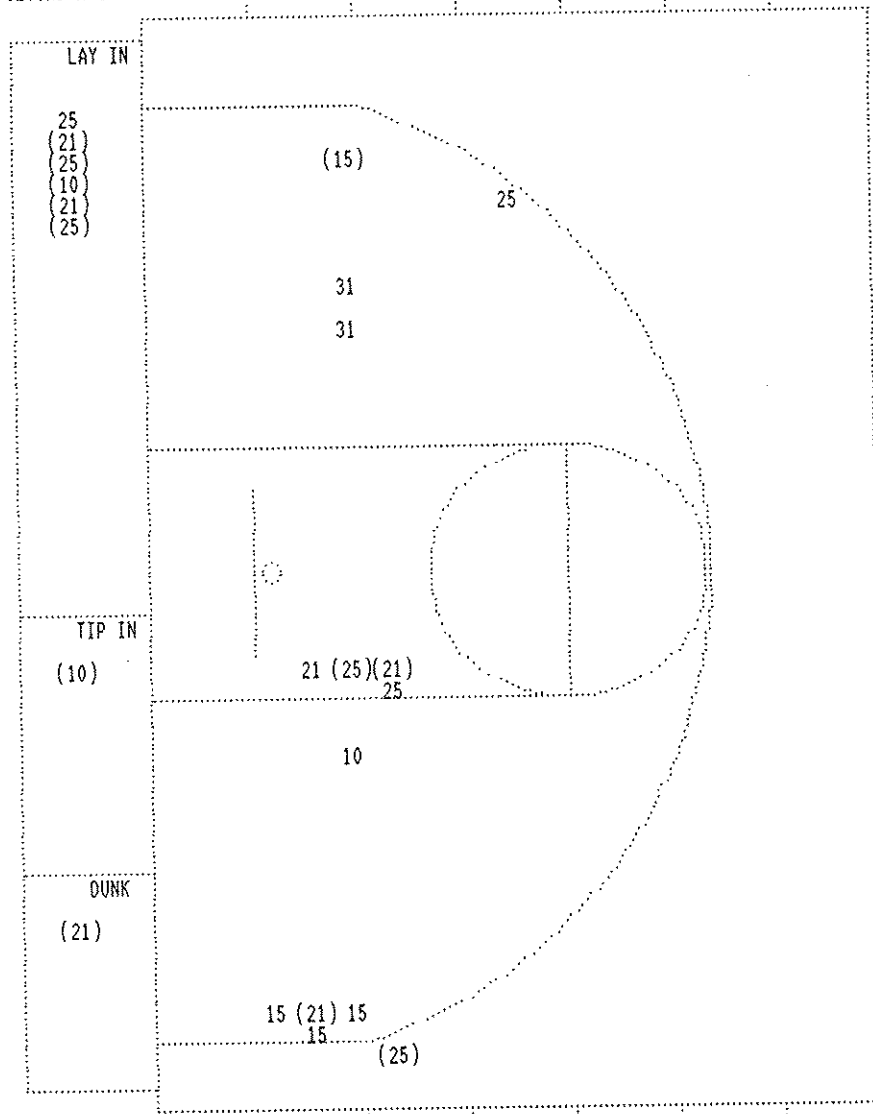
Tip off at 1:00 p.m. on 03/18/93 at BOYS STATE TOURNEY GAME 5
Produced by the KHSAA Sweet Sixteen Stat Crew with FINAL III - a Product of LEX:

PAGE : 1

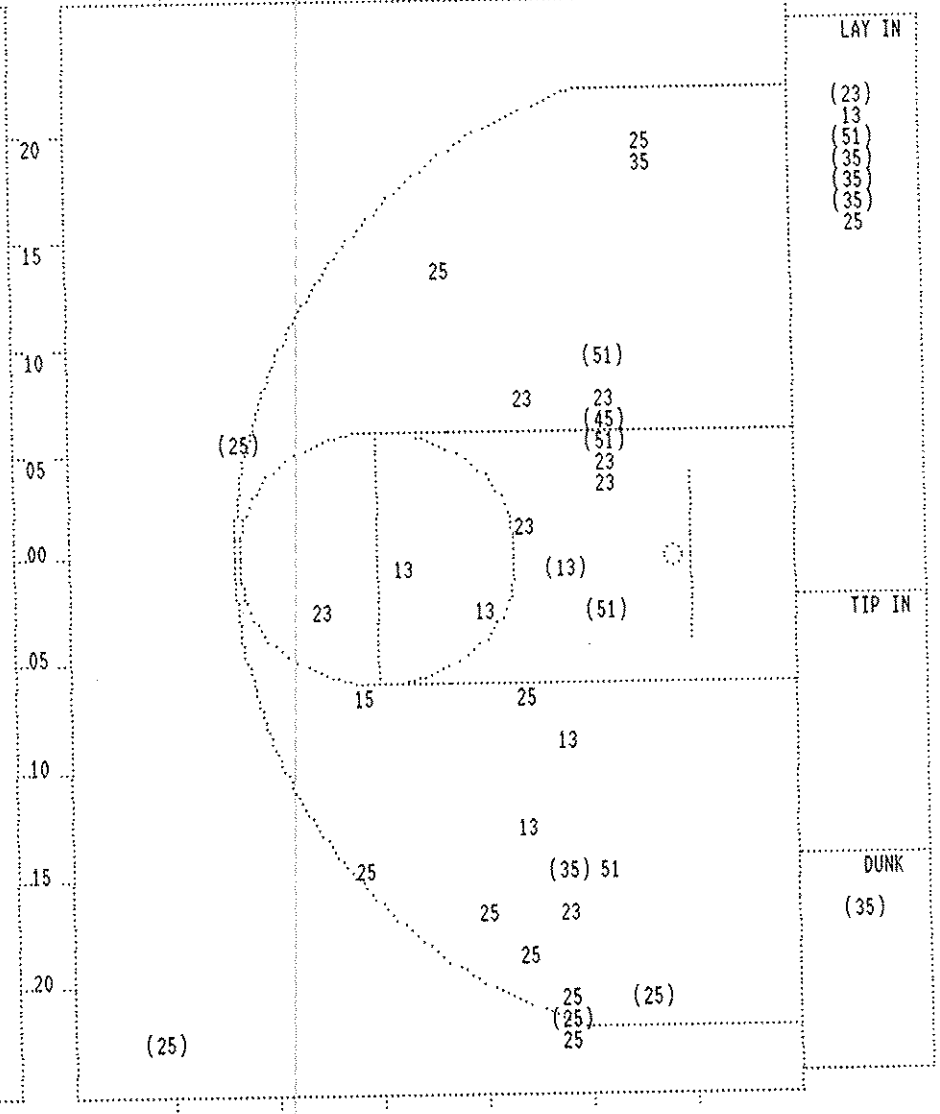
Player	Team	MARION COUNTY	Time	Score	CHRISTIAN COUNTY	Player	Team
CRUME, ALEX, SCOTT, ELTON, O'DANIEL, STUART, DOUGLAS, MICHAEL, EPPS, ANTHONY		Ball to KNIGHTS			THOMPSON, COREY, BIDES, STEVE, LOVAN, TONY, LOVAN, JAMIE, CHAMBERS, CHRIS		
2	1	Foul on DOUGLAS, MICHAEL	3 7:47	43-30*	Layup Off Fast Break by THOMPSON, COREY	2-4	50.0% 14-32 43.7%
			3 7:47				
			3 7:47	43-31*	THOMPSON, COREY, 1 Free Throw made	1-1	100% 1-1 100%
			3 6:43	43-33*	6 ft Left Side Jump shot by LOVAN, TONY Assist by CHAMBERS, CHRIS	4-7	57.1% 15-34 44.1%
			3 6:20	43-35*	10 ft Left Side Jump shot by LOVAN, TONY Assist by CHAMBERS, CHRIS	5-8	62.5% 16-35 45.7%
						4	8
		REB: 15 A: 8 BLK: 3 TO: 6 PF: 1 S: 4 FT: 4-7 57.1% FG: 18-34 52.9%	3 6:16		REB: 20 A: 8 BLK: 1 TO: 12 PF: 0 S: 1 FT: 1-1 100% FG: 16-35 45.7%		
		No. 1 MARION COUNTY			T I M E - O U T		
6-9	66.6%	19-35 54.2%	3 pt 20 ft Right Side Jump shot by DOUGLAS, MICHAEL Assist by SCOTT, ELTON	3 6:06	*46-35		
3		9					
1-2	50.0%	5-9 55.5%	EPPS, ANTHONY, 2 Free Throws made 1st missed 2nd Sub In: BIGGERS, VINCENT Out: CRUME, ALEX Sub In: ENGLISH, DERRICK Out: O'DANIEL, STUART	3 5:42	*47-35		
				3 5:03			
				3 5:03			
5-7	71.4%	20-36 55.5%	3 pt 20 ft Left Base Line Jump shot by SCOTT, ELTON Assist by DOUGLAS, MICHAEL	3 4:36	*50-35		
2		10					
				3 4:21	50-37* Follow Layup by LOVAN, TONY	6-9	66.6% 17-39 43.5%
				3 3:53	50-39* 4 ft Lane Driving by LOVAN, JAMIE	6-10	60.0% 18-40 45.0%
				3 3:43	Foul on CHAMBERS, CHRIS	2	2
				3 3:12	50-41* Layup Off Fast Break by BIDES, STEVE	3-8	37.5% 19-41 46.3%
				3 3:12			
				3 3:12	BIDES, STEVE, 1 Free Throw missed	0-1	00.0% 1-2 50.0%
				3 2:51	Foul on LOVAN, TONY	3	3
6-8	75.0%	21-41 51.2%	6 ft Lane Driving by SCOTT, ELTON	3 2:47	*52-41		
				3 2:25	Foul on BIDES, STEVE	2	4
				3 2:25	Sub In: McCOMBS, TONY Out: BIDES, STEVE		
				3 2:25	Sub In: LEAVELL, LEON Out: THOMPSON, COREY		
				3 1:52	Foul on LEAVELL, LEON	1	5
2-3	66.6%	6-10 60.0%	DOUGLAS, MICHAEL, 1 Free Throw made	3 1:52	*53-41		
2-4	50.0%	6-11 54.5%	DOUGLAS, MICHAEL, 1 Free Throw missed	3 1:51			
				3 1:11	53-43* 6 ft Left Side Follow by McCOMBS, TONY	1-2	50.0% 20-46 43.4%
4-12	33.3%	22-45 48.8%	4 ft Lane Follow by EPPS, ANTHONY	3 0:53	*55-43		
				3 0:42	Foul on LOVAN, JAMIE	2	6
7-9	77.7%	23-46 50.0%	Alley Oop Layup by SCOTT, ELTON Assist by EPPS, ANTHONY	3 0:19	*57-43		
5		11					
				3 0:19	Foul on LEAVELL, LEON	2	7
1-1	100%	7-12 58.3%	SCOTT, ELTON, 1 Free Throw made	3 0:19	*58-43		
2		3	Foul on SCOTT, ELTON	3 0:06			
				3 0:06	LOVAN, TONY, 2 Free Throws missed both	0-2	00.0% 1-4 25.0%
				3 0:00	58-46* 3 pt 33 ft Right Angle Jump shot by CHAMBERS, CHRIS	3-10	30.0% 21-48 43.7%

MARION COUNTY				Time	Score	CHRISTIAN COUNTY				Player	Team	
BIGGERS,VINCENT,SCOTT, ELTON,ENGLISH,DERRICK,DOUGLAS,MICHAEL,EPPS, ANTHONY						THOMPSON, COREY,BIDES, STEVE,LOVAN, TONY,LOVAN, JAMIE,CHAMBERS, CHRIS						
				4 7:28	58-48*	Ball to COLONELS						
				4 6:43		Driving Layup by BIDES, STEVE				4-9	44.4% 22-50 44.0%	
				4 6:26		Foul on CHAMBERS, CHRIS				3	9	
1	4		Foul on BIGGERS,VINCENT	4 6:10								
2	5		Foul on BIGGERS,VINCENT	4 6:10	58-50*	BIDES, STEVE, 2 Free Throws made both				2-3	66.6% 3-6 50.0%	
				4 5:40	58-53*	3 pt 21 ft Left Angle Jump shot by CHAMBERS, CHRIS				4-11	36.3% 23-51 45.0%	
5-13	38.4%	24-48	50.0% Layup Off Fast Break by EPPS, ANTHONY	4 5:28	*60-53							
				4 5:13	60-55*	Driving Layup by BIDES, STEVE				5-10	50.0% 24-52 46.1%	
						Assist by THOMPSON, COREY				1	9	
3	6		Foul on DOUGLAS,MICHAEL	4 4:59								
			REB: 24 A: 11 BLK: 3 TO: 12 PF: 6	4 4:59		REB: 32 A: 9 BLK: 2 TO: 16 PF: 8						
			S: 5 FT: 7-12 58.3% FG: 24-48 50.0%	No. 2 MARION COUNTY	T I M E - O U T		S: 4 FT: 3-6 50.0% FG: 24-53 45.2%					
				4 4:59	60-56*	THOMPSON, COREY, 2 Free Throws made 1st missed 2nd				2-3	66.6% 4-8 50.0%	
				4 4:49		Foul on CHAMBERS, CHRIS				4	9	
			Sub In: O'DANIEL,STUART Out: ENGLISH,DERRICK	4 4:49								
0-1	00.0%	7-13	53.8% BIGGERS,VINCENT, 1 & Bonus missed 1st	4 4:49								
6-14	42.8%	25-49	51.0% 3 pt 22 ft Left Side Jump shot by EPPS, ANTHONY	4 4:20	*63-56							
			Assist by SCOTT, ELTON									
4	12		Foul on O'DANIEL,STUART	4 4:05								
1	7			4 4:05		LOVAN, TONY, 1 & Bonus missed 1st				0-3	00.0% 4-9 44.4%	
				4 3:53		Foul on LOVAN, TONY				4	10	
1-3	33.3%	8-15	53.3% BIGGERS,VINCENT, 1 & Bonus made 1st missed 2nd	4 3:53	*64-56							
2-4	50.0%	26-51	50.9% Follow Tip by BIGGERS,VINCENT	4 3:49	*66-56							
				4 3:48		Foul on THOMPSON, COREY				1	11	
2-4	50.0%	9-16	56.2% BIGGERS,VINCENT, 1 Free Throw made	4 3:48	*67-56							
			Foul on O'DANIEL,STUART	4 3:37								
				4 3:36		LOVAN, TONY, 1 & Bonus missed 1st				0-4	00.0% 4-10 40.0%	
			Foul on O'DANIEL,STUART	4 3:33								
				4 3:33	67-58*	THOMPSON, COREY, 1 & Bonus made both				4-5	80.0% 6-12 50.0%	
				4 3:26	67-61*	3 pt 20 ft Right Base Line Jump shot by CHAMBERS, CHRIS				5-14	35.7% 25-57 43.8%	
						Assist by LOVAN, JAMIE				4	10	
3-5	60.0%	27-52	51.9% Alley Oop Layup by BIGGERS,VINCENT	4 3:12	*69-61							
			Assist by DOUGLAS,MICHAEL									
			Sub In: ENGLISH,DERRICK Out: O'DANIEL,STUART	4 2:58								
				4 2:58	69-63*	15 ft Right Side Jump shot by BIDES, STEVE				6-11	54.5% 26-58 44.8%	
			Foul on BIGGERS,VINCENT	4 2:39								
				4 2:37		LOVAN, JAMIE, 1 & Bonus missed 1st				0-1	00.0% 6-13 46.1%	
				4 2:35	69-65*	3 ft Lane Follow by LOVAN, TONY				7-11	63.6% 27-59 45.7%	
				4 2:28		Foul on THOMPSON, COREY				2	12	
3-4	75.0%	11-18	61.1% ENGLISH,DERRICK, 1 & Bonus made both	4 2:28	*71-65							
8-11	72.7%	28-54	51.8% Layup Off Fast Break by SCOTT, ELTON	4 1:45	*73-65							
7-12	75.0%	29-55	52.7% Dunk Off Fast Break by SCOTT, ELTON	4 1:15	*75-65							
			Assist by EPPS, ANTHONY									
				4 1:13		REB: 40 A: 10 BLK: 2 TO: 16 PF: 12						
			REB: 34 A: 14 BLK: 4 TO: 16 PF: 10	T I M E - O U T	CHRISTIAN COUNTY No. 1	S: 6 FT: 6-13 46.1% FG: 27-66 40.9% *						
			S: 5 FT: 11-18 61.1% FG: 29-55 52.7%									
7-16	43.7%	30-56	53.5% Layup Off Fast Break by EPPS, ANTHONY	4 1:02	*77-65							
				4 0:43	77-67*	Follow Dunk by BIDES, STEVE				7-13	53.8% 28-69 40.5%	
				4 0:40		Foul on LOVAN, TONY				5	13	
				4 0:40		Sub In: McCOMBS, TONY Out: LOVAN, TONY						
2-4	50.0%	12-20	60.0% EPPS, ANTHONY, 1 & Bonus made 1st missed 2nd	4 0:40	*78-67							
				4 0:23	78-70*	3 pt 20 ft Right Side Jump shot by CHAMBERS, CHRIS				6-19	31.5% 29-70 41.4%	
						Assist by THOMPSON, COREY				2	11	
				4 0:22		REB: 42 A: 11 BLK: 2 TO: 18 PF: 13						
			REB: 35 A: 14 BLK: 5 TO: 18 PF: 10	T I M E - O U T	CHRISTIAN COUNTY No. 2	S: 8 FT: 6-13 46.1% FG: 29-70 41.4%						
			S: 7 FT: 12-20 60.0% FG: 30-56 53.5%									
				4 0:22		Subs In: AKIN, DOUG, PUTTY, JASON, JONES, DERRICK, PEPPER, CALVIN, OWEN, ANDRE						
						Out: LOVAN, JAMIE, THOMPSON, COREY, CHAMBERS, CHRIS, BIDES, STEVE, McCOMBS, TONY						
				4 0:07		Foul on PEPPER, CALVIN				1	14	
				4 0:07		Sub In: LOVAN, SHANNON Out: PEPPER, CALVIN						
3-3	100%	14-22	63.6% SCOTT, ELTON, 1 & Bonus made both	4 0:07	*90-70							
				4 0:00		3 pt 15 ft Lane Jump shot by PUTTY, JASON, missed				0-1	00.0% 29-71 40.8%	
0-1	Tot-1	0-1	Tot-36 Rebound by BIGGERS,VINCENT	4 0:00								

SECOND HALF SHOT CHART Produced by the KHSAA Sweet Sixteen Stat Crew with FINAL III - a Product of LEXICON SPORTS



MARION COUNTY			
Player		Player	
21 - SCOTT, ELI	5 / 6	83.3%	
15 - DOUGLAS, MI	1 / 4	25.0%	
25 - EPPS, ANTH	4 / 7	57.1%	
10 - BIGGERS, VI	2 / 3	66.6%	
31 - ENGLISH, DE	0 / 2	0.0%	
Layups	1-9 Ft	10-15 Ft	Over 15 Ft 3 Pointers Total
7 / 8	2 / 5	0 / 2	3 / 7 12 / 22
87.5%	40.0%	0.0%	42.9% 54.5%



CHRISTIAN COUNTY					
Player		Player			
23 - THOMPSON,	1 / 8	12.5%	15 - PUTTY, JAS	0 / 1	0.0%
35 - BIDES, STE	5 / 6	83.3%	45 - McCOMBS, T	1 / 1	100.0%
51 - LOVAN, TON	4 / 5	80.0%			
13 - LOVAN, JAM	1 / 6	16.6%			
25 - CHAMBERS,	4 / 13	30.7%			
Layups	1-9 Ft	10-15 Ft	Over 15 Ft 3 Pointers Total		
6 / 8	4 / 11	2 / 6	0 / 5 4 / 10 16 / 40		
75.0%	36.4%	33.3%	0.0% 40.0% 40.0%		